



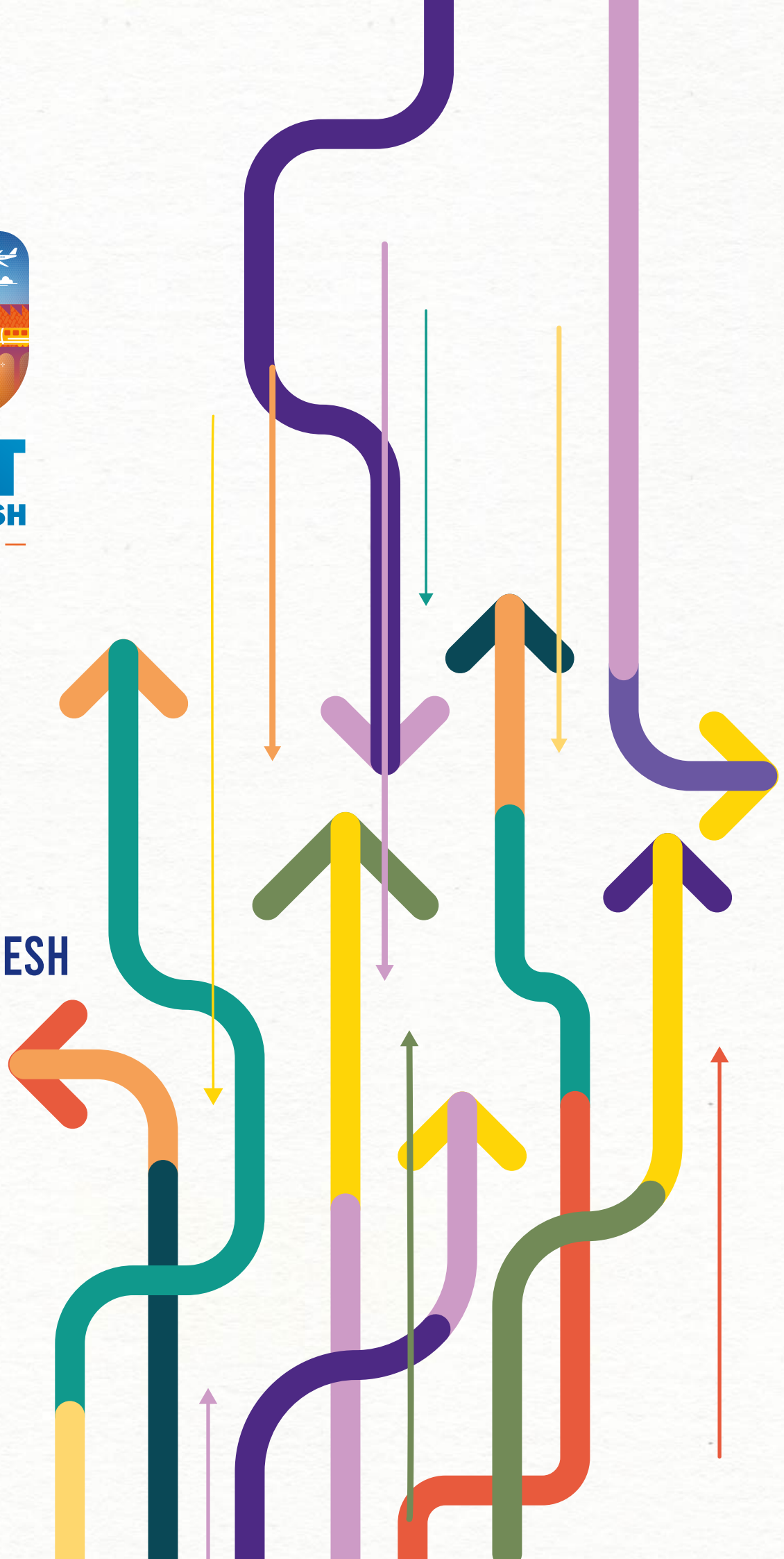
Government of  
Madhya Pradesh



# INVEST MADHYA PRADESH

— INFINITE POSSIBILITIES —

## MADHYA PRADESH INVESTMENT POLICY HIGHLIGHTS



# INDUSTRIAL PROMOTION POLICY

## ATTRACTIVE POLICIES TO STEP-UP MANUFACTURING IN THE STATE



### Investment Promotion Assistance:

upto 40% of investment in Plant and Machinery

## MULTIPLIERS TO CAPITAL SUBSIDY



1.5 X Capital Subsidy on Employment generation



1.2 X Capital Subsidy on Exports



1.2 X Capital Subsidy for promoting priority areas



### Green Industrialization Assistance

for establishing Waste Management Systems like ETP, STP.



### Infrastructure Development Assistance

for creating Power, Water and Road Infrastructure



**Power Tariff Rebate at ₹ 1/- unit**



**Reimbursement of Patent charges**

## ADDITIONAL INCENTIVES FOR FOOD PROCESSING AND TEXTILES & GARMENT MANUFACTURING SECTORS



### Food Processing

- 50% additional incentive on Capital Subsidy
- Mandi Tax (Agri trade tax) exemption for 5 years



### Textile & Garment

- Interest Subvention
- Employment Generation
- Training incentives for Garment Industry



- **Customized Package** available for **Mega Scale Industrial Units** starting from **₹ 100 Crores**
- **Customized Package** for **Food Processing and Garment Manufacturing** starting from **₹ 25 Crores**



## MSME & STARTUP



### Financial Incentives:

- Investment Promotion Assistance : 40% of Investment in Plant & Machinery
- Additional 8% to SC/ST/Women
- Assistance for Quality Certifications
- Energy Audit
- Intellectual Property Rights



### For Startups:

- Seed Funding,
- Electricity Duty Exemption
- Rental Assistance
- Employment Incentives
- Patent & Training Support

## HEALTH INFRASTRUCTURE



### Financial Incentives:

Capital Subsidy upto 50%



### Land related Concessions:

Upto 40% for multi-speciality, Super-speciality hospitals & medical colleges

## PUMPED HYDRO



### Land related Concessions :

Upto 65% Rebate on Circle Rates for developers

### Stamp Duty Reimbursement :

Upto 65% Reimbursement on purchase of private land for projects



### Power Related Assistance :

#### For Renewable Energy supply

- Electricity Duty Exemption
- Waiver of Energy Development Cess



### Wheeling Charges :

50% Waiver for 5 years



### Registration cum Facilitation Fees :

20% Exemption



## IT, ITeS, ESDM & Data Centres

---



### Capital Assistance for IT & ESDM :

Subsidy upto 25% on Gross Fixed Capital Investment

### Interest Subsidy for IT :

6% on the Interest recovered or the actual rate (whichever is lower)



### Rental Assistance for IT :

Reimbursement in rental costs for IT companies

### Power related assistance for Data Centres :

- Reimbursement of Electricity Duty for upto 7 Years
- Power Tariff Reimbursement upto ₹2/unit



### Land Assistance :

- Land rebate upto 75% on Collector guidelines
- Relaxation on Built-up area

## RENEWABLE ENERGY

---

### Land Assistance :

50% Rebate on Circle Rates for developers



### Stamp Duty Reimbursement :

Upto 50% reimbursement on stamp duty and registration charges for eligible units



### Power Related Assistance :

Electricity Duty and Energy Development Cess Exemption



### 50% Waiver on Wheeling Charges :



## TOURISM

---



### Land related Concessions :

- Fixed land prices with 90-year lease term
- Financial Assistance for projects based on investment and employment



### Capital Subsidy :

Subsidy upto 40% in Fixed Capital Investment for Hotels, Wellness Centers, Wildlife Resorts, Ropeways, and Remote Area Projects



### Responsible Tourism & Eco-Initiatives :

100% Subsidy for Eco-Certification and 25% for Pollution Control Measures



### Marketing & Promotional Initiatives :

Assistance for Participating in National and International Events

## FILM TOURISM

---



### Film Infrastructure :

Incentives for film production and infrastructure development subsidy



### Support for promoting film tourism :

Marketing and Promotional Assistance for Film Tourism



### Single Window Clearance :

Dedicated portal for hassle-free approvals



## ETHANOL & BIO-FUEL

---



### Production Linked Incentive :

₹1.5/ltr to OMCs, upto 100% of Plant & Machine for 7 Years



### Electricity Duty :

100% Exemption for 5 years



### Zero Liquid Discharge :

Subsidy upto 50% maximum ₹1 Cr.



### Infrastructure Development Subsidy :

upto 50% for Developing Power, Water and Road Infrastructure.  
maximum ₹1 Cr each



### Mandi Tax Reimbursement :

100% upto 5 years

## REAL ESTATE

---



### Financial Incentives :

- Waiver of Shelter Tax
- Reduced Fees for affordable housing
- FAR bonuses for EWS/LIG projects



### Ease of Registration & Permissions :

Single registration, and instant permissions



### Floor Area Ratio (FAR) & Development Rights :

FAR free zones and promotion of TDR for flexible development rights



### Digital Transformation :

Paperless operations, e-Property IDs, and real-time project monitoring



## DEFENCE PRODUCTION PROMOTION

---



### Land Allotment Concessions :

Upto 75% Concession and sub-leasing allowed



### Special Incentives :

Single-window approvals and vendor incentives aligned with mother units

### Subsidies and Financial Support :



- Investment Promotion Assistance same as Industrial Promotion Policy with additional 2 Years besides normal duration
- Transfer Subsidy
- Electricity Duty exemption



### Technical Assistance :

Skill development via Industrial Training Institutes transfers & 50% reimbursement for Technology transfer



### Special Support for Joint Ventures :

Subsidized land, and 100% Stamp Duty Reimbursement for large projects

## HOUSING REDEVELOPMENT

---



### Financial Incentives :

Re-development cess at 7%, and Exemption from municipal/revenue charges



### Public-Private Partnership (PPP) :

Promoting Re-development projects under PPP mode



### Exemptions for Developers :

No obligation for Economically Weak Classes /Lower Income Group units or Shelter Fee, and Waived Bank Guarantee Deposits



### Additional FAR :

Of 0.5 over and above the permissible FAR



# CONTACT US

**Principal Secretary,  
Department of Industrial Policy and Investment Promotion**  
D-204, Vallabh Bhawan-3, Mantralaya, Bhopal, M.P.

Phone: +91-755-2708661  
Mail: pscomnind@mp.gov.in

**Principal Secretary,  
Department of Micro, Small & Medium Enterprises**  
VB-III, 2nd Floor, Vallabh Bhawan, Mantralaya, Bhopal, M.P.

Phone: +91 -755-2677966. 2677 988  
Mail: psmsme@mp.gov.in

**Managing Director,  
MP Industrial Development Corporation Ltd. (MPIDC)**  
21, Arera Hills, Bhopal, M.P.

Phone: +91-755-2575618, 2571830  
Mail: md@mpidc.co.in

**Commissioner,  
Department of Micro, Small & Medium Enterprises**  
4th Floor, Vidhyachal Bhawan, Bhopal, M.P.

Phone: +91 -755-2677966. 2677 988  
Mail: ic-mp@nic.in

**SCAN HERE TO  
REGISTER**

[www.investmp.in](http://www.investmp.in)



ORGANISED BY



NATIONAL PARTNER



KNOWLEDGE PARTNER

